

Kitsap County EMS and Trauma Care Council EMS Operational Meeting Minutes

November 18, 2009
Readiness Center
Bremerton, WA

Attendees:

Barb Lovato	KCEMS	Mike Wernet	SKFR
Rhonda Roberts	KCEMS	Lori Bisping	KCEMS
Joe Repar	CKFR	Thomas O'Donohue	PFD
Martin Bennett, MD	KCEMS	Joe Schweiger	KCEMS
Steve Engle	NKFR	Stan Plyler	BFD

Called to order by Chair Steve Engle at 10:19 am.

I. Approval of October 21, 2009 Minutes

Thomas made a motion to approve October's minutes as written, motion seconded by Stan. Minutes were approved as written.

II. Old Business

A. Policy Review

At the December meeting the group will vote on the Field Equipment Policy. There is concern if there will be WAC changes for the EMT levels. The new levels for the State will be Emergency Responder, EMT, Advanced EMT and Paramedic. The decision was to vote on the EMT or EMT-IV Recertification at the December meeting and make any revisions after the new WAC is approved.

Law enforcement has not responded yet on the Restraint Policy. After discussion the decision was to add zip ties to the approved restraints, as long as law enforcement apply them, and to keep handcuffs as an unapproved restraint. The policy will be given to the Fire Chiefs to take to the Police Chiefs. Barb will make the suggested changes and forward to the Fire Chiefs.

The Nasogastric Policy was archived.

B. Protocols

There were 77 responses to the survey. The majority of the comments included a requested an alphabetized table of contents and an index. They would also like to separate out ALS from BLS. Dr. Bennett will review and other protocols and put together a new format by July 1. Then the Protocol Committee will be given the protocols to review and give suggestions. A tentative date is to give the providers a draft set of the protocols for feedback. The date of implementation for the protocols will be January 2011. The KCEMS offices will send out cost for the new protocols as early as possible in 2010.

C. QI Plan

The draft QI Plan ([attachment 1](#)) was reviewed. The first page has a flowchart on how the process will work. The second page had the didactic form of the process with examples of when different charts maybe requested from the agencies. Part of this plan is having the Protocol Committee meeting between a two of times a year to quarterly. They will review issues to see if there may be a need to make changes in the protocol.

One suggestion was to change any where there was Multi-disciplinary to Multi-Agency. The other suggestion was to add a step in the flowchart for an agency initiated review on the same line as MPD Review. Lori would like the contacts of the PIOs and if there is a newsletter giving out to the community she would like the contact person for the newsletter. She would also like from all the agencies their Shift Calendar and emails from all EMTs and Paramedics.

The next step is to create the complete written QI Plan. She would like feedback emailed to her about the draft QI Plan. Her email is lori@kitsapcountyems.org.

III. New Business

A. Policies

There were no new policies to review.

B. Chair & Vice Chair Voting

Mike Wernet was unanimously voted in as Chair of the EMS Operations Committee.

Joe Repar was unanimously voted in as Vice Chair of the EMS Operations Committee.

C. SEI Workshop

There will be a SEI workshop reviewing all the changes on January 24, 2010. It will be at the Geriatric Seminar hosted by the NW Regional EMS & TCC office. That will be January 23 & 24.

D. NREMT Testing

National Registry EMT testing will begin January 2010. This will replace the State exam for EMT-Bs. The State will be doing analysis during this change over and giving feedback.

The KCEMS office currently has a 95% pass rate for the State Exam, but a 57% pass rate for the National Registry. The changes in the WAC allow for prescreening the students before entering the EMT-B class. The suggestion is to look into a pretest like the college COMPASS exam before going into the class.

As of January 2010 class the passing requirements in the class will be 80% on all quizzes and module exams. Currently there is a 70% requirement.

Olympic College is currently working on a certification of proficiency for EMTs. The students will have a prerequisite of a college English class and anatomy and physiology course before taking the EMT- B class.

In 2010 there will only be two EMT-B classes offered. The one in January offered through the Olympic College and the other one in September. Joe asked all the Medical Officers to share this information with their Training Officers for planning purposes.

E. Taxi Transporting

Royal Taxi is taking DSHS coupons to take non-urgent patients. Dr. Bennett will review and possibly work with BFD as a pilot program.

F. Staff Updates

1. Training Coordinator

The EMT-B class in Bainbridge Island finished and the class at KCEMS will be finishing up December 5. Joe is focusing on getting some mentors for the EMT-B students when they are doing their ride alongs. The next class will be the one offered through Olympic College and it will start in January.

Joe will be going down to East Pierce to watch their Intensive Airway course. The concern is the medics not reaching their intubation requirements. This course offers the medic to take one eight hour course every certification period and 2 two-hour course the other two years. That would be covered by the Base Station Lab for Airway. Their other option is to get six live intubations in their three year certification period. Joe will offer the class two days in a row to give the medics more options of when they can take the class. The eight hour class will need to be taken in their first year of their certification.

The medics doing the interfacility transports need to have a Critical Care Transport class. This class is 80 hours. Joe will work with Olympic Ambulance to get this training for their medics.

Joe submitted is tentative training schedule ([attachment 2](#)) for next year.

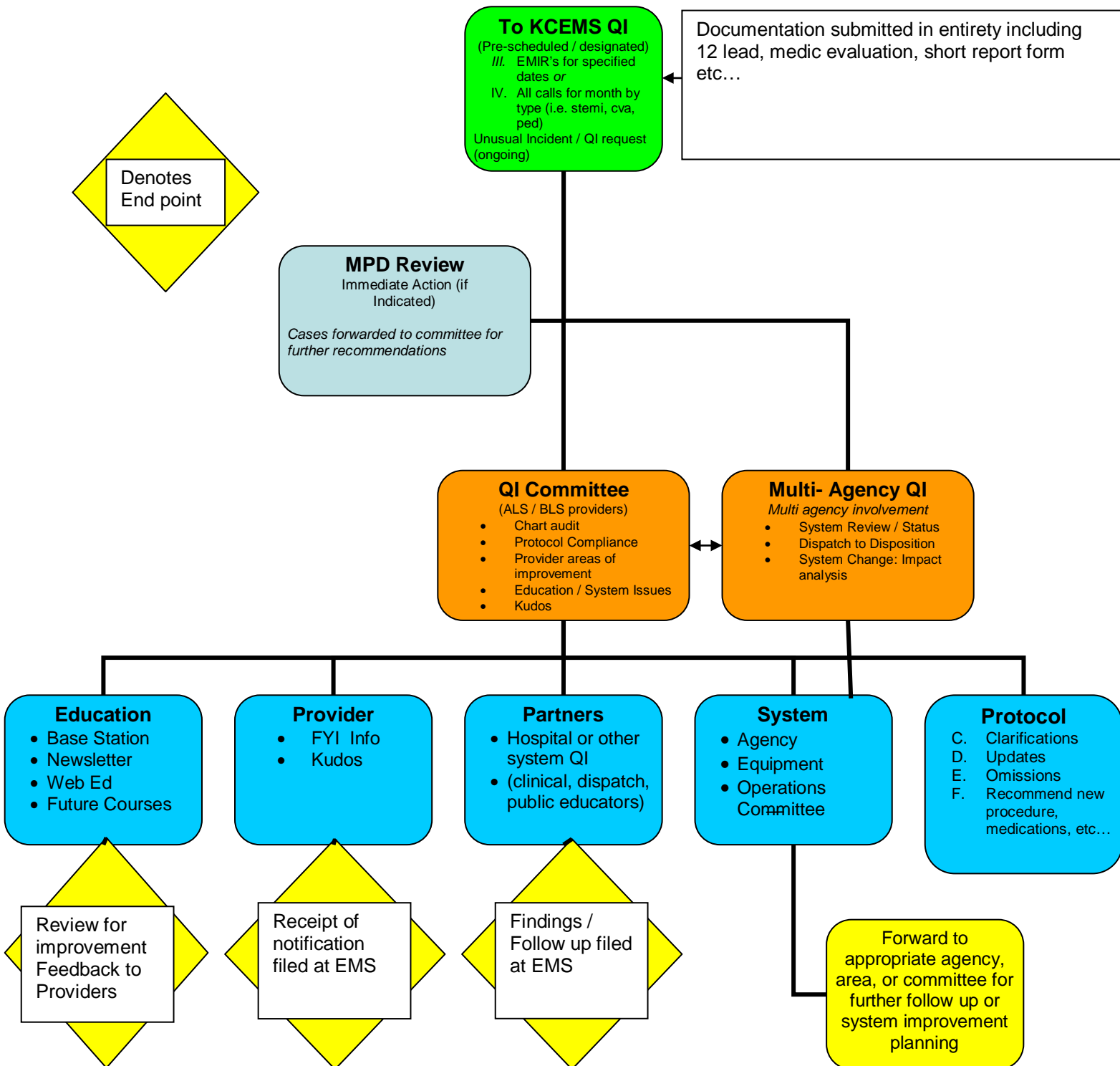
IV. Good of the Order

1. Steve Engle was appointed Chair of NW Regional EMS & TCC.
2. Fire Commissioners & Chiefs Holiday Brunch will be Sunday, December 13 at Tuckers Gold Mountain Golf Course
3. Kitsap County 911 Holiday Party will be at Comfort Inn in Bremerton Friday, December 11.

Meeting Adjourned: 12:56 pm

Next meeting will be scheduled for December 16 at 10:00 am.

Attachment 1



QI Discussion Topics & Chart Review 2010
ALS / BLS QI Committee Agenda

- December: Dispatch to Disposition Pilot Example:
- 2009 cases in review
 - QI Program Draft / Chart flow Draft / study areas discussion
 - Documentation Evaluation Tool
 - ALS: Cardiac / 12 lead: common mistakes identified
 - Forward for January base station education
 - BLS: CVA
 - Forward to for OTEP education bullets
- January: Random System Documentation evaluation
- ALS & BLS: System Watch Goals Set
- February: *Multi disciplinary Committee* **ALOC Charts In (January)**
- March: Case Reviews / ALOC (suggested) charts out to committee
Documentation discussion for April Base Station
- April ALOC discussion
Case Review
- May *Multi disciplinary Committee* **No Trans / AMA charts (April)**
- June Charts out No Transport / AMA System check
- July No Transport / AMA Discussion
Pediatric Cases: education focus areas set
- August *Multi disciplinary Committee* **Chart Pull August dates**
- September Charts out: Random System: Documentation Eval
- October Charts in: Post Documentation Training Evaluation
- November *Multidisciplinary Committee*
- December 2011 Planning Summit

*Charts always submitted (suggested)
cardiac arrest, ET, pediatric (all or cardiac/ respiratory arrest), airlift

Data: ET (attempt vs. success) IV attempt vs. success)

 **KITSAP COUNTY EMERGENCY MEDICAL SERVICES** 
Quality Assurance and Improvement Review

Initial Review Performed by _____ Date _____

Reason for recommending review:

Following to be completed during QA meeting Reviewing Committee: _____

Summary of Committee Discussion

Disposition

Feedback to _____ Forward to _____
Date _____ Date _____

Plan of Action

FYI / No further action needed Written response requested
Recommend Counseling Remediation Initiated
Other _____

Operational Issue

Disposition _____

Comments:

Date Completed _____ By _____

Reviewed for completion _____

THIS DOCUMENT PROTECTED BY RCW 70.41.200, 70.168.090

2010

JANUARY

M	T	W	T	F	S	S
				1	2	3
4	5	6	7	8	9	10
11	12	13	14	15	16	17
18	19	20	21	22	23	24
25	26	27	28	29	30	31

FEBRUARY

M	T	W	T	F	S	S
1	2	3	4	5	6	7
8	9	10	11	12	13	14
15	16	17	18	19	20	21
22	23	24	25	26	27	28

MARCH

M	T	W	T	F	S	S
1	2	3	4	5	6	7
8	9	10	11	12	13	14
15	16	17	18	19	20	21
22	23	24	25	26	27	28
29	30	31				

E V E N T S

Jan. 7 Base Station - Cardiac Emergencies	April 1: Base Station – Renal Failure
	April 23: ACLS for EMT's
	April 12 – May 5: CCT M, W, F (Except Apr.30)
	April 24: EMT Skills Seminar
	April 30: ACLS (2 sessions – A.M./P.M.)
Feb. 4: Base Station: - Hypertensive Crisis	May 6: Base Station – Poisoning and O.D.
Feb. 4: Base Station Lab- Cardiac Care	May 6: Base Station Lab: Trauma
	May 17: Assess. and Treatment of Trauma
	May 18: Assess. and Treatment of Trauma?
March 4: Base Station - Burns	
March 19: 12 Lead ECG Course	June 3: Base Station – Altered Mental Status
PALS – Date TBA	June 24: Intensive Airway Group 1
	June 24: Intensive Airway Group 2

APRIL

M	T	W	T	F	S	S
			1	2	3	4
5	6	7	8	9	10	11
12	13	14	15	16	17	18
19	20	21	22	23	24	25
26	27	28	29	30		

MAY

M	T	W	T	F	S	S
					1	2
3	4	5	6	7	8	9
10	11	12	13	14	15	16
17	18	19	20	21	22	23
24	25	26	27	28	29	30
31						

JUNE

M	T	W	T	F	S	S
	1	2	3	4	5	6
7	8	9	10	11	12	13
14	15	16	17	18	19	20
21	22	23	24	25	26	27
28	29	30				

